

USEFUL CONTACTS

Age Concern Slough & Berkshire East.

Contact:- 01753 822890

Age UK. Berkshire

Contact. 0800 0681602

Information & Advice

Alzheimers Dementia Support

Contact Terrie Hall

07516 165647

Santok Modhvadia

07543 243613

Berkshire Vision.

Support. Information & Advice for visually impaired people & carers.

Contact. **0118 9872803.**

www.berkshirevision.org.uk

CRUSE providing advice to people struggling to cope with grief arising from bereavement.

CONTACT. 01344 411919

Slough Cancer Support Network.

Contact. **01344 304404**

www.involve.community/cancer

reception@involve.community

Slough u3a. Retired people enjoy a range of activities and interest groups.

Contact. www.sloughu3a.com

Samaritans. 24hour.
0116 123

Silverline 24hour.
08004 708 090

Slough Wellbeing Friends.
01753 944198

Sakoon Through Cancer

Breast Cancer awareness in the South Asian Community

Contact. **07904 864448**

Produced by Marcia Wright



SLOUGH 50PLUS FORUM

Issue 8 December 2021

1999—2021

16th DECEMBER 2021

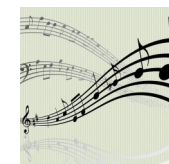
1.30pm

SEASONAL SPECIAL FORUM

NEWS? VIEWS?

HEIDI

Will Entertain with 60's 70's & 80's Music



Please wear a mask and be prepared to observe social distances if requested to do so.

KINGSWAY UNITED REFORMED CHURCH
CHURCH STREET SLOUGH SL1 1SZ

MEMBERSHIP FREE

(Funded by One Slough Community Fund & Members Donations)

For more information contact 01753536906 or

E mail:- marciaw1937@gmail.com

FORUM REPORT

Thursday 18th November 2021 Alison Beer , Principal libraries outreach officer, Slough Borough Council explained the current consultation on the future of Slough library services , the options being consulted on,

1. Reduce the money available to spend on buying publications.
2. Keep all library buildings but reduce the hours they are open, hours staffed and the space dedicated to the library.
3. Keep all the main library buildings open but reduce the opening and staffed hours at Langley and Cippenham, also reduce the staffed hours at the Curve and Britwell libraries.
4. Close Langley and Cippenham library buildings but maintain the staffing and opening hours at the Curve and Britwell.
5. Move all library services out of the current main library buildings and re-locate services to be delivered from a range of other locations and online across the borough.

Ways to take part online:-

<https://eu.surveymonkey.com/r/libraries>

www.slough.gov.uk/consultations



by completing and returning the paper copies Alison distributed to members or by completing or filling in the relevant page in the “**Our Services. Our Future**”. Consultation booklet delivered to every household in Slough.

Shahnaz Paxton, Zhora Jeffries & Marcia who are all members of the **Slough Coproduction Network**, a group of volunteers and senior council, NHS,,Mental Health & Healthwatch staff working together representing people who use Adult Social Care Services.

Group aims are to shape local health and social care services. Really listen and engage with local people to make decisions about services together. Work with and engage with the wider community.

Volunteers have produced a “**Working together**” toolkit for health and social care professionals engaging with communities in Slough and assisted with decisions on numerous other projects since March 2019.



DIARY DATES 2022

20th January 2022— Co-op Legal Services

17th February 2022– Meet the younger generation

17th March 2022— Changes to Council services.

21st April 2022— Health & Relaxation

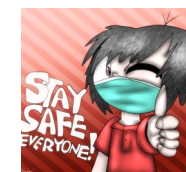
19th May 2022 — Spring updates.

16th June 2022— Annual Review.

Come along, bring your friends and neighbours, share your questions, issues relating to living in Slough.



COVID—19 is still with us, the rules on mask wearing have changed. Please wear a mask when in shops, pharmacies, post offices and anywhere you are in close contact with others.



REMEMBER:- It is important to have a Flu vaccine and a Covid Booster vaccine if you can. Take care of yourself and others this winter.

